

Trolleys | transport of persons / push & geared

Features:

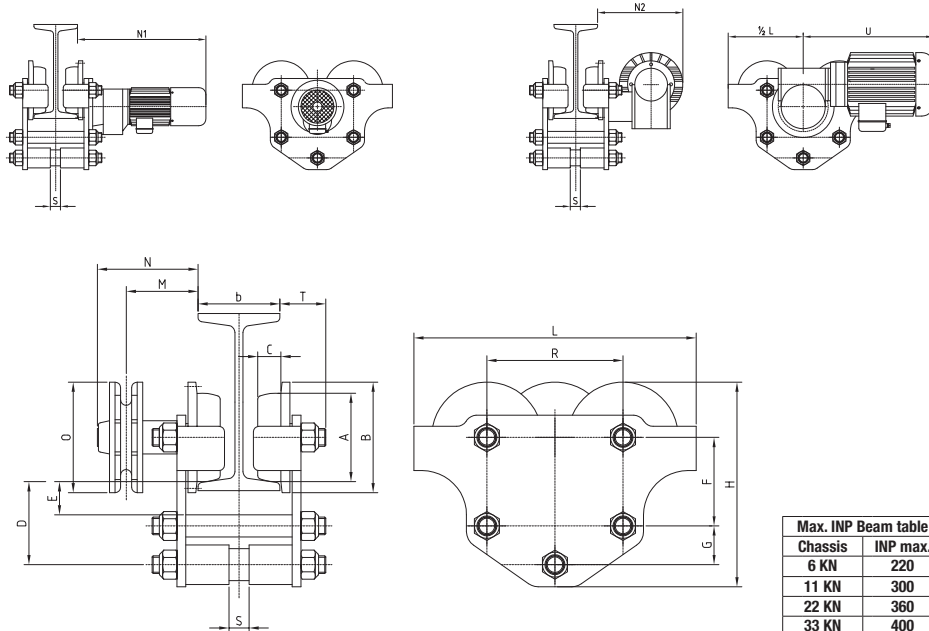
- Capacities 320- 4.000 kg
- Capacity including persons and materials
- According to EN 1808, every trolley fully tested on calibrated test bench
- Trolleys for transport of persons are always designed for one specific beam type (non-adjustable)
- Electric galvanised chassis and wheels up to 64 kN model. Suspension bolts with zinc primer. Models 084 kN and higher standard surface treatment, 2 layer Alkyd paint 60 mu
- Trolley wheels in C45, with life time lubricated fully enclosed 2RS ball bearings

Options:

- Triangular suspension safety plate with lugs for hoisting line and safety line
- Rubber buffers on trolley
- Extended chain wheel drive, M=.....mm (max. 300 mm)
- Special side plates to increase dimension "E"
- Special surface treatment hot dip galvanized or ZincAl flame sprayed treatment for corrosive outdoor operations

Electric trolleys:

- Switch box with 2 relais for trolley drive
- Necessary counterweight if applicable
- Limit switches, mounted on trolley, excl. cabling



Max. INP Beam table	
Chassis	INP max.
6 kN	220
11 kN	300
22 kN	360
33 kN	400
52/64 kN	450

Technical information:

- 1) * Mass plain type.
 ** Mass geared type, excl. hand chain 1 mtr Lift = 1 kgs.
 *** Mass electric type, excl. additional counterweight. (if applicable)
- 2) Min. beam radius is depending strongly on "R" beam type and flange width.
 For curved beams always contact Van Leusden or your local supplier.
- 3) INP Table to be observed when projecting the specific trolley type on such beam.
- 4) Dimension on request.

Table 81700-82700

S.W.L. Kg.	Chassis Type	beam width "b"	Dimensions														Mass. 1) *..** ***	Push 81720..		Geared 81720..		Hand Chain Galv. per m Price €	Hand Chain S.St. per m Price €	Elec. worm-gearing motor Single Speed 82720..		Electric with helical geared brake motor						
			A	B	C	L	H	R	D	E	F	G	T	N	N1	N2		U	M	O	Art. Nr			Price €	Art. Nr	Price €	Art. Nr	Price €	Single Speed 10 m/min 82720..		Double Speed 5 + 20 m / min 82720..	
			Art. Nr	Price €	Art. Nr	Price €	Art. Nr	Price €	Art. Nr	Price €	Art. Nr	Price €	Art. Nr	Price €	Art. Nr	Price €		Art. Nr	Price €													
320	11 kN	Fixed	60	75	18	190	150	99	60	20	60	30	40	90	-	-	-	65	100	5-6	..-01110	..-01120										
630	22 kN	Fixed	80	100	22	255	185	123	75	27	80	35	50	90	400	150	220	65	100	13-14	..-02210	..-02220				..-02200	..-02210	..-02220				
1000	33 kN	Fixed	100	120	25	300	225	144	90	35	100	40	55	95	405	4)	4)	70	100	21-22	..-03310	..-03320				..-03300	..-03310	..-03320				
1600	52 kN	Fixed	125	150	30	375	285	174	117	40	120	60	65	130	410	4)	4)	100	135	31	..-05210	..-05220				..-05200	..-05210	..-05220				
2000	64 kN	Fixed	125	150	30	375	285	174	117	40	120	60	65	130	410	4)	4)	100	135	35-36	..-06410	..-06420				..-06400	..-06410	..-06420				
2500	84 kN	Fixed	160	190	35	450	355	220	145	45	145	80	85	135	450	-	-	115	270	45												
3200	104 kN	Fixed	160	190	35	450	355	220	145	45	145	80	85	135	450	-	-	115	270	105												
4000	124 kN	Fixed	160	190	35	450	355	220	145	45	145	80	85	135	450	-	-	115	270	107												
																					105-110											
																					115											