

Trolleys | hand / push & geared

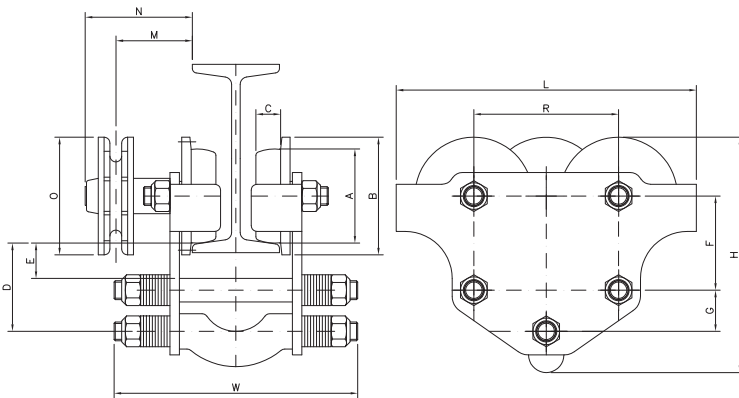


Features:

- Capacities 500- 25.000 kg
- Suspension of all types of hoists
- Electric galvanised chassis, suspension bolts and wheels up to 64 KN model
- Models 84 KN and higher standard surface treatment, 2 layer Alkyd paint 60 mu

Options:

- Fixed beam execution
- Straight suspension bolt with spacers
- Extra suspension set for other beam range
- Rubber buffers on trolley
- Extended chain wheel drive, M=...mm (max. 300 mm)
- Special side plates to increase dimension "E"
- Static load test with factory certificate, 3.1.b EN50049
- Special surface treatment



Max. INP Beam table	
Chassis	INP max.
6 KN	220
11 KN	300
22 KN	360
33 KN	400
52/64 KN	450

Technical information:

- 1) *Mass plain type.
 **Mass Geared type, excl. hand chain 1 mtr Lift = 1 kg.
- 2) Min. Beam radius is depending strongly on "R" beam type and flange width.
 For curved beams always contact Van Leusden or your local supplier.
- 3) INP Table to be observed when projecting the specific trolley type on such beam.

Table 81000-81200

S.W.L. Kg.	Hoist Mass Max. Kg.	Chassis Type	Adjustable beam width min-max mm.	Dimensions													Chain Pull Max. Kg.	Weight Kg. 1) *..**	Push 81000.. Art. Nr.	Push Price €	Geared 81200.. Art. Nr.	Geared excl. Hand-chain Price €	Electr. galv Hand-chain Price €	Stainl st. hand-chain Price €		
				A	B	C	L	H	W	R	D	E	F	G	N	M									O	
500	100	6 KN	55-102	45	60	15	150	125	160	75	52	15	45	30	-	-	-	-	3	..-00600						
			105-152						210											..-00601						
1000	120	11 KN	55-102	60	75	18	190	150	170	99	60	20	60	30	90	65	100	10	5-6	..-01100	..-01100					
			105-152						220											..-01101	..-01101					
			156-203						270											..-01102	..-01102					
			207-254						325											..-01103	..-01103					
									390											..-02200	..-02200					
2000	250	22 KN	74-127	80	100	22	255	195	215	123	75	27	80	35	90	65	100	16	11-12	..-02201	..-02201					
			127-180						265											..-02202	..-02202					
			190-243						330											..-02203	..-02203					
			254-305						390											..-03300	..-03300					
3200	150	33 KN	90-143	100	120	25	300	235	250	144	90	35	100	40	95	70	100	25	18-19	..-03301	..-03301					
			149-203						310											..-03302	..-03302					
			203-254						360											..-03303	..-03303					
			251-305						410											..-05200	..-05200					
									425											..-05201	..-05201					
5000	300	52 KN	106-156	125	150	30	375	295	275	174	117	40	120	60	130	100	135	20	31-32	..-05201	..-05201					
			160-210						330											..-05202	..-05202					
			210-260						380											..-05203	..-05203					
			255-305						425											..-06400	..-06400					
6300	200	64 KN	106-156	125	150	30	375	300	275	174	117	40	120	60	130	100	135	25	33-34	..-06400	..-06400					
			160-210						330											..-06401	..-06401					
			210-260						380											..-06402	..-06402					
			255-305						425											..-06403	..-06403					
8000	550	84 KN	Fixed (119 Min)	160	190	35	450	365	bw+150	220	145	45	145	80	135	115	270	16	85-90	..-08401	..-08401					
10000	600	104 KN	Fixed (131 Min)	160	190	35	450	370	bw+150	220	145	45	145	80	135	115	270	19	90-95	..-10401	..-10401					
12500	150	124 KN	Fixed (143 Min)	160	190	35	450	375	bw+150	220	145	45	145	80	135	115	270	23	95-100	..-12401	..-12401					
16000	700	164 KN	Fixed (155 Min)	200	240	50	560	445	bw+185	272	165	42	165	100	155	130	300	20	135-145	..-16401	..-16401					
20000	800	204 KN	Fixed (170 Min)	200	240	50	560	455	bw+185	272	165	42	165	100	155	130	300	25	140-150	..-20401	..-20401					
25000	900	254 KN	Fixed (185 Min)	200	240	50	560	460	bw+195	272	165	42	165	100	160	130	380	25	150-160	..-25401	..-25401					