

EEx-Products

EEx-Products



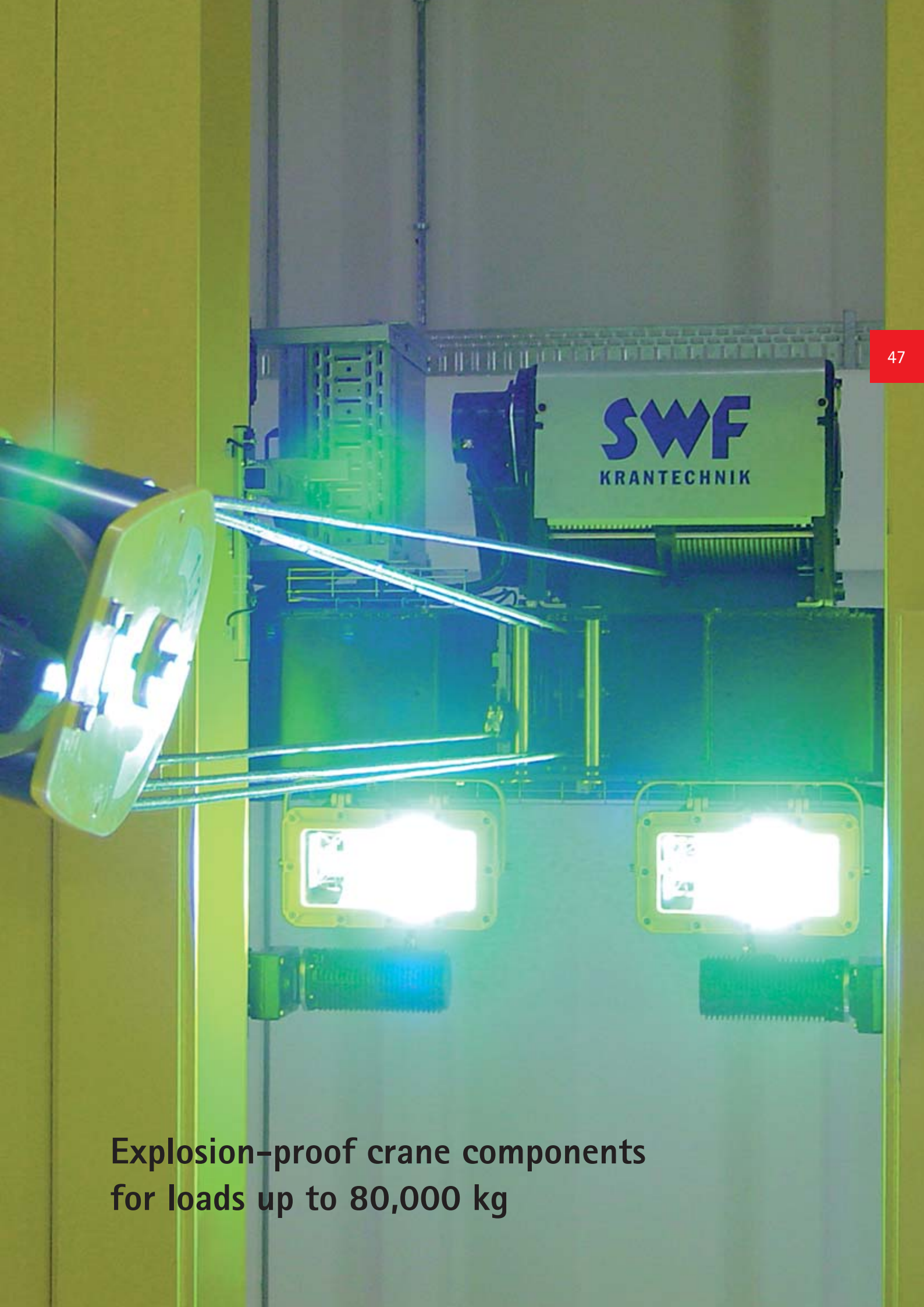
- **Maximum operational reliability**
Design approved components, motor protection IP66, electrical cubicle protection IP65 and as an option bronzed parts to give additional protection
- **Optimum use of space**
Compact design and optimum approach dimensions
- **Numerous usage possibilities**
Available as an electric chain hoist, electric wire rope hoist or crane component package

Advantage: Top performance with the greatest possible safety

Explosion proof crane components from SWF deliver the goods.

Our complete quality assurance programme together with our strict production controls, guarantee the highest possible standard of safety for all of our components.

Explosion proof crane components from SWF distinguish themselves – just like the basic NOVA models – because of their high performance motors, compact design and approach dimensions as well as their tremendous longevity.

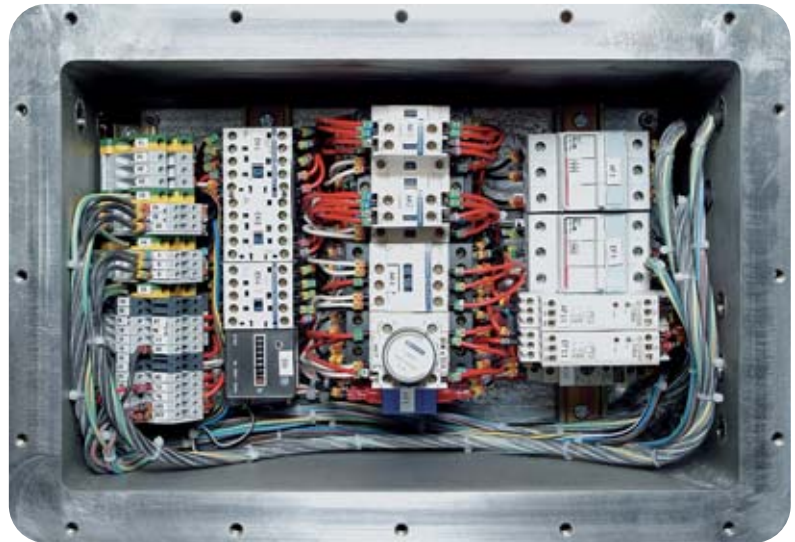


**Explosion-proof crane components
for loads up to 80,000 kg**



The special components offered by SWF for use in explosion proof atmospheres fulfil the highest of safety standards. The products range from a simple electric chain hoist to a complete electrical crane kit.

EEx-Products



The use of modern frequency inverter technology for crane and trolley travelling with explosion-protected component packages ensures gentle transporting of loads and low-wear operation of the crane.

At SWF you can get explosion proof components, suitable for the following groups:

- ATEX II2G EEx cde IIB T4, Zone 1
- ATEX II2G EEx cde IIC T4, Zone 1
- ATEX II3G EEx nA II T3, Zone 2
- ATEX II2D EEx cde IIB T4 IP65, Zone 21
- ATEX II3D IP55 135 °C, Zone 22

Explosion proof crane components from SWF correspond to the guidelines according to ATEX 94/09/EG, the regulations of FEM and the European safety standards (EN). SWF EEx-Products are certified within the bounds of design approval (INERIS 03 ATEX 3015 X).

EEx-Products

