

ENGINEERED LIFTING SOLUTIONS

HOISTING FOR EXTREME APPLICATIONS



**ULTRA-LOW HEADROOM TROLLEY
HOIST COMBINATION**

1,000 KG – 10,000 KG LIFTING CAPACITY



**ATEX
Explosion Protected**

Leaflet No. KITO-83870:01

ULTRA-LOW HEADROOM TROLLEY HOIST COMBINATION

1,000 KG – 10,000 KG LIFTING CAPACITY



ATEX
Explosion Protected

Designed and manufactured according to:

- ▶ EC machinery directive 2006/42/EC
- ▶ ATEX Directive 2014/34/EU
- ▶ EN13157
- ▶ Manufactured in the Netherlands

Standard features:

- ▶ Suitable for extremely narrow spaces and low headroom applications
- ▶ Equipment classification Gas Ex II 2G EX h IIB T3 Gb (zone 1)
- ▶ Equipment classification Dust Ex II 2D EX h IIIB T200°C Db (zone 21)
- ▶ Light weight
- ▶ Low pulling force on the hand chain
- ▶ Chain hoist executed with double safety pawl, safe and sure brakes
- ▶ Chain hoist with overload protection by slipping clutch
- ▶ Surface treatment 2 layer paint system and power coating, colour Munsell 6YR6/14
- ▶ Nickel plated load chain, grade V (G 100) in acc. with standard EN818-7
- ▶ Hand chain electric galvanized
- ▶ Trolley wheels with life time lubricated bearings
- ▶ Wheel break support and anti-tilt device integrated
- ▶ Rubber buffers mounted on trolley
- ▶ Ambient temperature -20°C / +40°C

Remark:

Ultra-low headroom hoist units are executed with a fixed suspension set within the range of the beam width as mentioned in the tables.

Explosion Protected:

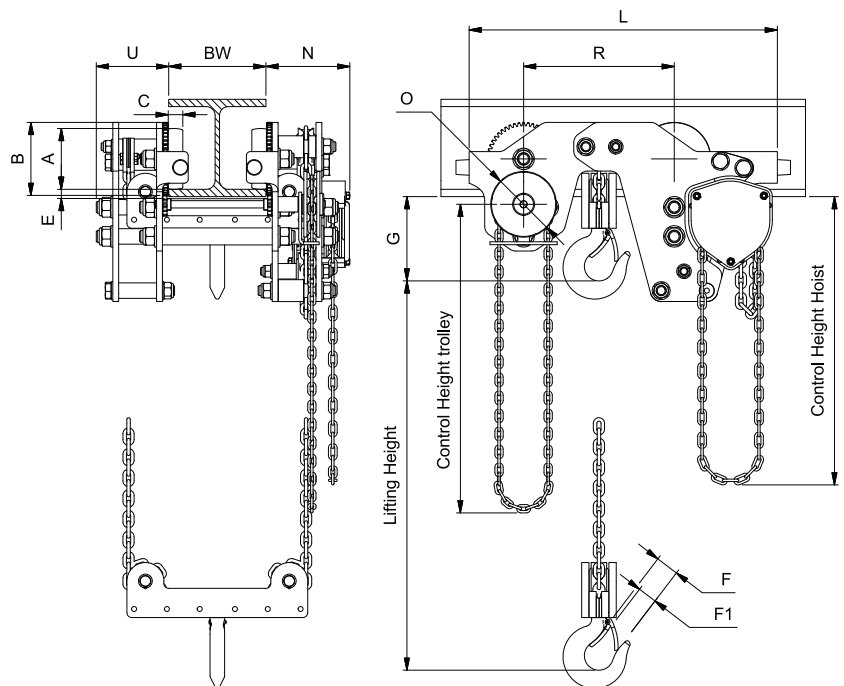
Equipment is executed with non-sparking materials for fast mechanical contact parts for hand chain movements and internal fast moving hoist parts, extended with unique and reliable bronze coated load hooks.

Optional:

- ▶ Available in equipment class Gas Ex II 2G EX h IIC T3 Gb (zone 1)
- ▶ Available in equipment class Dust Ex II 2D EX h IIC T135°C Db (zone 21)
- ▶ Temperature class T4 / T135°C will be observed separately for each project
- ▶ Suitable for ambient temperature -40°C / +40°C
- ▶ Special surface protection acc. to ISO 12944
- ▶ 3.1 load test certificate
- ▶ Canvas chain bag
- ▶ Steel or stainless steel chain container
- ▶ Solid bronze wheels
- ▶ Parking device for parking in unloaded condition
- ▶ Stainless steel 316 load chain and hand chain
- ▶ Stainless steel nameplate with tag number
- ▶ General arrangement drawing in dwg. and 3D Step
- ▶ 3.1 material certificate for load bearing parts of the trolley

Special options:

- ▶ Also available in rack and pinion driven execution for operation under inclination.



Capacity kg	Article number	Chassis	Fixed beam width in range mm	No. of falls	Chain size mm	max. pulling force hoist kg	max. pulling force trolley kg	Weight 3 meters lift kg	Head- room G	Dimensions										
										A	B	C	E	F	F1	R	L	U	N	O
1,000	83870-01100	22 kN	74-300	2	5	21	13	45	130	Ø80	Ø100	22	21	34,6	29	226	466	152	104	Ø100
2,000	83870-02200	33 kN	90-300	2	6,3	24	18	86	162	Ø100	Ø120	25	22	40	36	266	551	150	106	Ø135
3,000	83870-03300	52 kN	106-300	2	7,1	29,5	18	140	183	Ø125	Ø150	30	19	46	42,5	310	635	174	149	Ø135
5,000	83870-06400	84 kN	119-300	2	9	38	20	315	267	Ø160	Ø190	35	36	40	38	430	894	208	196	Ø300
10,000	83870-10400	124 kN	134-300	4	9	38	30	410	270	Ø160	Ø190	35	35	50	47	630	1100	208	196	Ø375

* larger capacities up to 25,000kg on request

Changes in design and measurements reserved.

Van Leusden BV

Parelhoenweg 2 | 4791 PA Klundert | The Netherlands

Tel. +31 168 385 225 | www.vanleusden.com | info@vanleusden.com

LIFTING EXPECTATIONS