



MACHINE MOVERS

MODELS

MINIFORCE 30t
ST. 60t – 150t
TBC. 60t – 100t



MACHINE MOVERS

WHAT IS A SELF-PROPELLED TROLLEY?

The self-propelled trolley consists of a front rotating traction car (**ST-TBC**) of reduced dimensions (given the great capacity they have) and a pair of fixed rear trolleys (**CT**), that perform a function similar to that of the rear axle of a truck, carrying out the displacement and the maneuvers equivalent to this type of transport, but without limitation in the rotation of the tractor unit.

It supports large loads thanks to its multiple wheels of polyamide wheels and tight diameter, mounted on a tilting system (there is also the possibility of including some wheels of polyurethane to improve traction). It has a very low height because it is designed to be placed under any type of structure, machine or element and thus be able to move them, supported by the load on its rotating plate, with free rotation, which is coordinated with the couple of rear trolleys (**CT**) or of another type of rolling incorporated under load.

All the self-propelled tanks are controlled by a radio control or an auxiliary control with cable (both supplied in all the trolleys).

Its maximum speed is 5m / min, it is designed for flat use (no inclinations). But it could be used on ramps up to a maximum of 3 degrees (although the certification does not contemplate it and is under the responsibility of the customer, since they do not have brakes, only motor, and the capacity calculated is reduced by including inclination). In case of particular needs, default brake can be incorporated.



At **OX Worldwide** we have 2 ranges of self-propelled trolleys: **OX-ST** (three-phase electric) & **OX-TBC** (electro-hydraulic and batteries + lifting cylinder) to solve all the needs of moving heavy loads and we can also adjust them to the particular requirements of each application.

We are currently working on the fully electric **OX-STB** version, with mixed power to the grid and batteries, and in a much more compact configuration.

If you need more information do not hesitate to contact our technical and commercial team.



INDEX



page 04

MINIFORCE30t

page 05

**MINIFORCE30t
SPECIFICATIONS**

page 06

OX-ST 60t — 150t

page 07

OX-ST SPECIFICATIONS

page 08

OX-TBC 30t — 200t

page 09

OX-TBC SPECIFICATIONS

page 10

**ACCESORIES AND
SPARE PARTS**

page 11

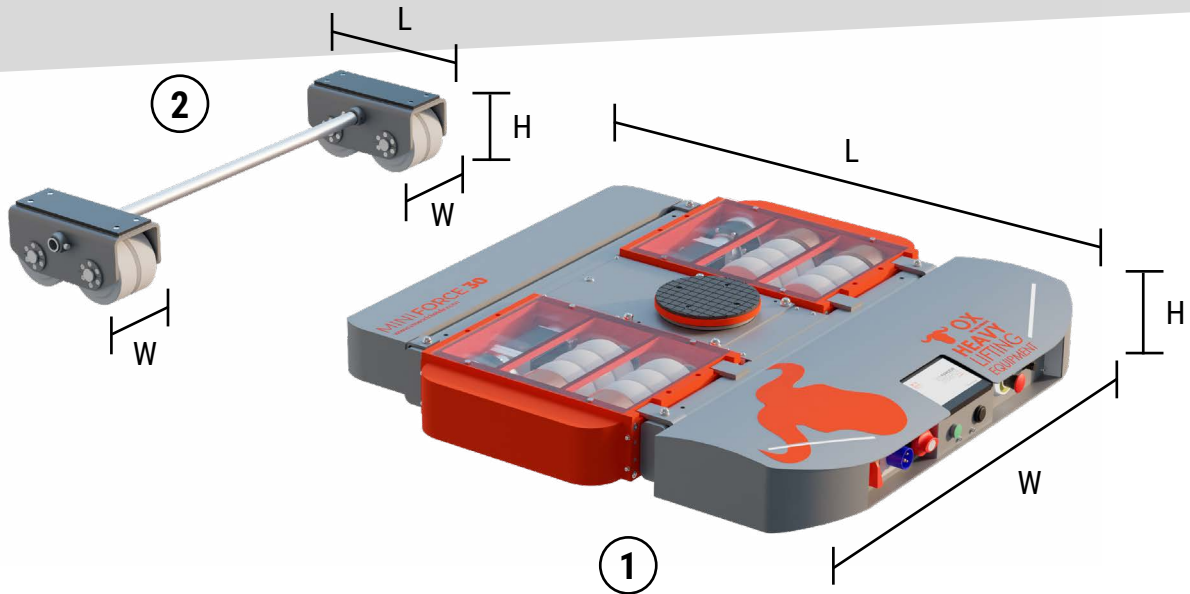
PORTFOLIO

page 12

**ROTATING TROLLEYS
TECHNICAL FEATURES**

page 13

**ROTATING TROLLEYS
POSSIBLE USES& TIONS**



NEW MINI**FORCE30**

NEW Self-Propelled Trolley with a 30t capacity, **the only one on the market capable of working with monophase 220v and with batteries with a touch control screen**, Wi-Fi connection, camera and a height of 175 mm, the lowest on the market in its category. Speed of up to 5.5 m/min and autonomy of up to 1.5 h.

With rear trolleys.

MODEL	MINIFORCE30 / STB30 "v2"	PAIR REAR TROLLEYS STB-30
Code	801STB2030	801CT2030
Load Capacity	15.000 Kgs	15.000 kgs/pair
Pulling Capacity	30.000 Kgs	-
Number of Castors	16	8
Type of Castors	4xPU* & 12xPA**	PA**
Traction Wheels	4xPU*	
Polyurethane Wheels Size	150 x 63 mm	150 x 60 mm
Polyamide Wheels Size	148 x 63 mm	
Height (H)	180 mm	180 mm
Dimensions (LxW)	1.213 x 1.190 mm	320 x 183 mm
Connecting bar	-	2 unid Diam. 32 x 1190 mm
	-	
Support surface	Diam. Turnplate 210 mm	Rectangular plate 310 x 100 mm
Weight	380 kgs	15 kg
Turning radius	751 mm	-
Radio remote control	1x - Danfoss Mod. TM IK2.MP08V	-
Cable Control	4 m	-
A/C Powered	230 V 50/60 Hz	-
D/C Powered	48 VDC	-
Adjustable Speed	2 speeds and variator	-
Max speed	6,5 mts/min	-
Op. Battery time	5 h	-
Charging time	3,5 h	-
Battery type	Lithium 48 VDC 72 AH	-
Touch Screen	LCD	-
Screen dimensions	7 Inches	-
Screen connectivity	WIFI	-

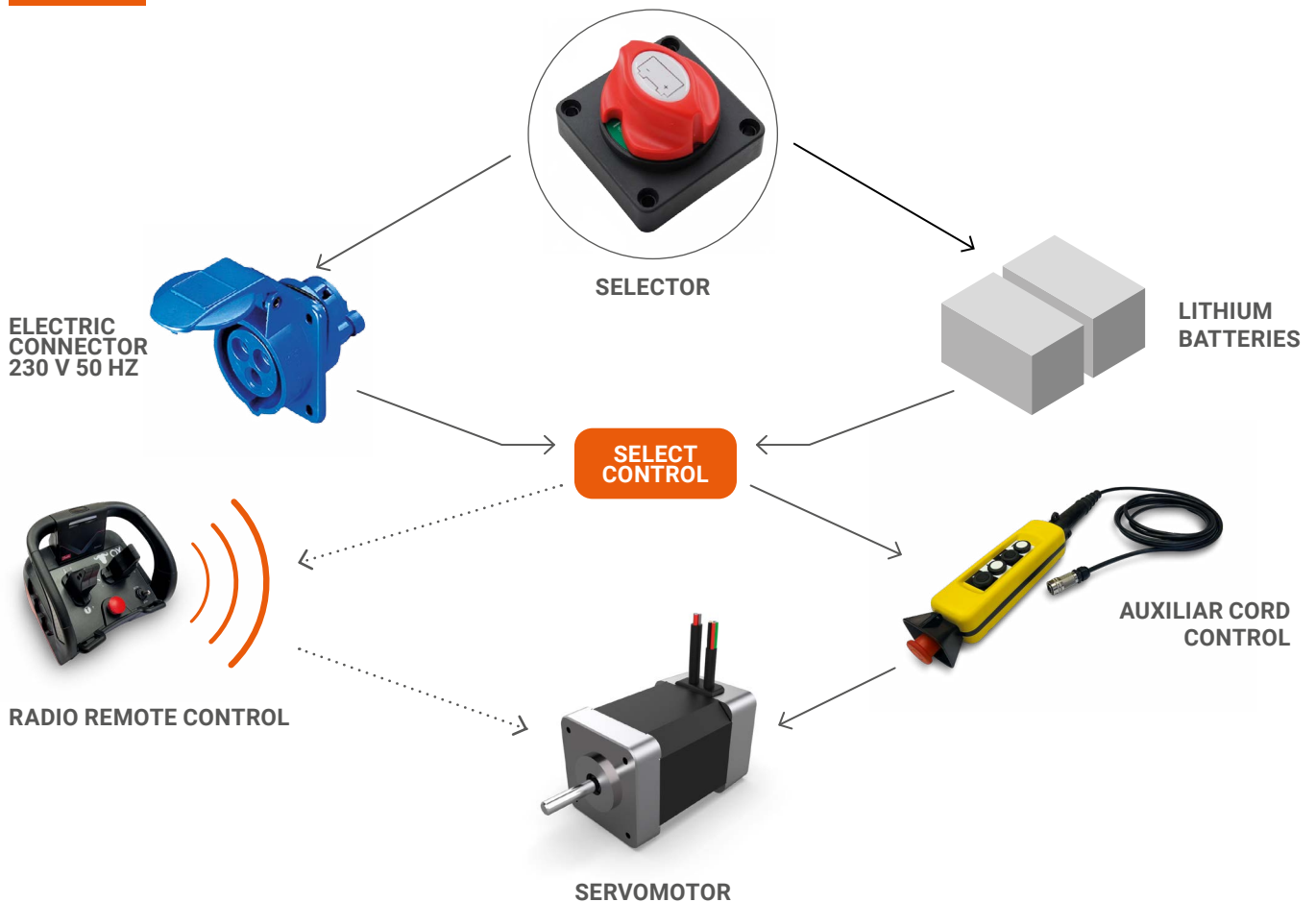
*PU: Polyurethane
 **PA: Polyamide

MACHINE MOVERS
MINIFORCE30
 SPECIFICATIONS

- Self propelled trolleys (turn 360°).
- Super-reduced Height
- The first one being powered by two options: lithium batteries and cable 230 V 50 Hz. With low consumption servo-motors
- Chain and pinion transmission in Polyurethane wheels + additional support Polyamide wheels.

- Supplied with a remote control and an auxiliary cord control.
- 2 speeds: slow and quick. And Adjustable speed.
- Touch panel control screen with WIFI connection to supply distance maintenance

MINIFORCE30
 BLOCK DIAGRAM



MACHINE MOVERS

OX-ST

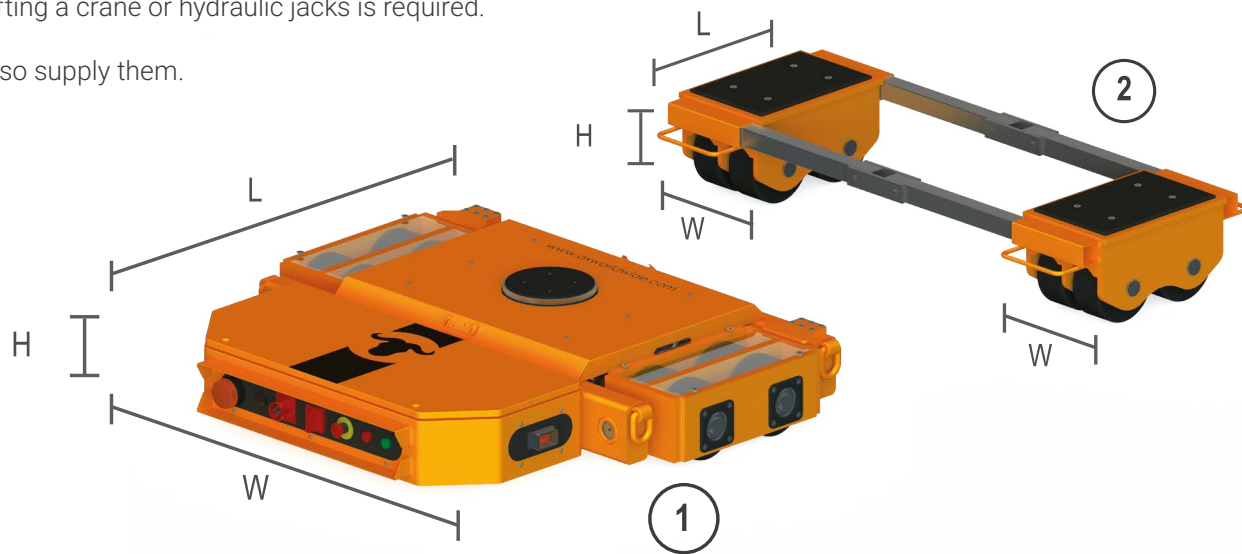
FEATURES



The ST models have direct three-phase power to the grid, without lifting cylinder nor batteries. It consists of the base of the range, being the most economical, since it must be connected to the grid by means of an electric cable.

To place the load on the trolley, a supplementary system such as lifting a crane or hydraulic jacks is required.

We can also supply them.



MODEL	OX-ST-060 V1	PAIR REAR TROLLEYS OX-CT-060	OX-ST-100 V3	PAIR REAR TROLLEYS OX-CT-100
Code	801ST1060	801CT1060	801ST3100	801CT1100
Load Capacity	30.000 Kgs	30.000 kgs/pair	50.000 Kgs	50.000 kgs/pair
Pulling Capacity	60.000 Kgs	-	100.000 Kgs	-
Number of castors	12	12	18	16
Type of castors	12xPA*	12xPA*	18xPA*	16xPA*
Traction wheels	12xPA*	-	18xPA*	-
Polyurethane wheels size	-	-	-	-
Polyamide wheels size	200 x 100 mm	200 x 100 mm	200 x 100 mm	200 x 100 mm
Height (H)	302 mm	302 mm	315 mm	315 mm
Dimensions (LxW)	1.509 x 1.520 mm	371 x 302 mm	1.582 x 1.919 mm	497 x 315 mm
Connecting bar	-	50X50 Square 1.200 mm x2	-	50X50 Square 1.200 mm x2
Support surface	Diam.Turnplate 283 mm	-	Diam.Turnplate 283 mm	-
Weight	790 kgs	130 Kgs/pair	1.070 kgs	180 Kgs/pair
Turning radius	1.086 mm	-	1.086 mm	-
Radio remote control	1x - Teleradio PNS-R15141	-	1x - Teleradio PNS-R15141	-
Cable Control	1x	-	1x	-
A/C Powered	400 V 50/60Hz	-	400 V 50/60Hz	-
D/C Powered	-	-	-	-
Adjustable Speed	1 speed with acceleration & deceleration ramp	-	1 speed with acceleration & deceleration ramp	-
Max speed	5 mts/min	-	5 mts/min	-

*PA: Polyamide

OX-ST SPECIFICATIONS

- Self propelled trolleys (turn 360°).
- Power: 380 VAC III 50 Hz. Optional: different tensions and frequencies.
- Chain and pinion transmission in every wheel.
- Supplied with a remote control and an auxiliar cord control.
- Speed between 4 or 5 m/min (or to be agreed). With speed variator.
- Polyamide wheels.

OX-ST BLOCK DIAGRAM



OX-ST BLOCK DIAGRAM

380 VAC three-phase powered trolley. This model comes with a geared motor that creates rotation on the wheels.



MACHINE MOVERS

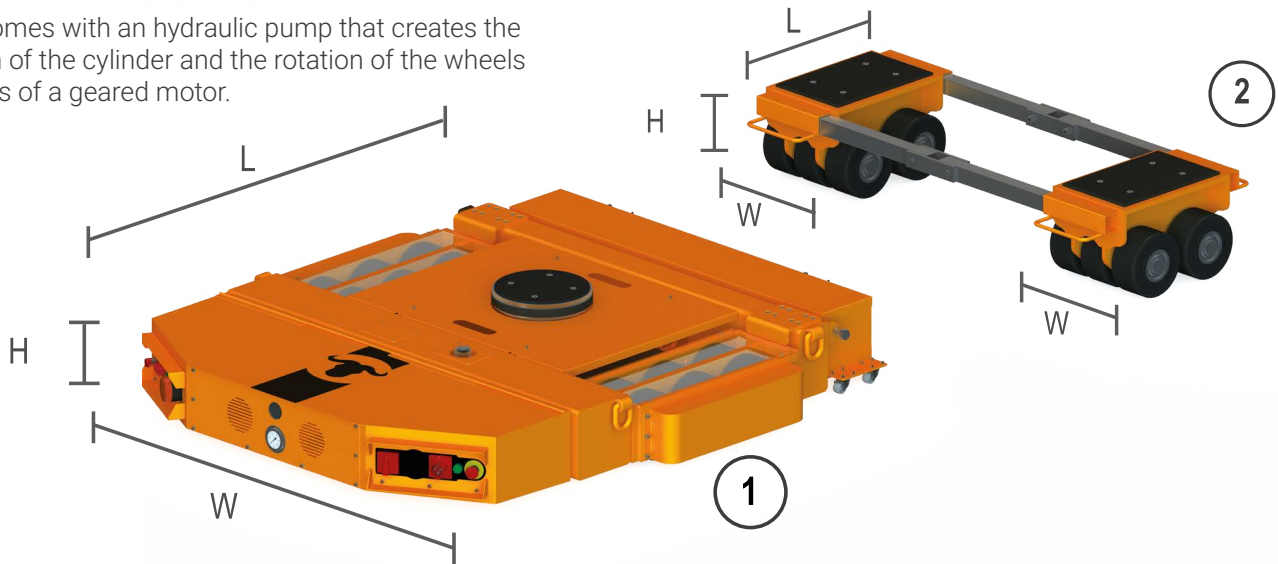
OX-TBC

FEATURES



This is the most complete model. This model can operate with three-phase mains (380 Vac) or with batteries. You can choose the type of power supply.

It also comes with an hydraulic pump that creates the elevation of the cylinder and the rotation of the wheels by means of a geared motor.



MODEL	OX-TBC-060 V1	PAIR REAR TROLLEYS OX-CT-060	OX-TBC-100 V1	PAIR REAR TROLLEYS OX-CT-100
Code	801TBC1060	801CT1060	801TBC1100	801CT1100
Load Capacity	30.000 Kgs	30.000 kgs/pair	50.000 Kgs	50.000 kgs/pair
Pulling Capacity	60.000 Kgs	-	100.000 Kgs	-
Number of castors	12	12	18	16
Type of castors	12xPA*	12xPA*	18xPA*	16xPA*
Traction wheels	12xPA*	-	18xPA*	-
Polyurethane wheels size	-	-	-	-
Polyamide wheels size	200 x 100 mm	200 x 100 mm	200 x 100 mm	200 x 100 mm
Height (H)	302 mm	302 mm	315 mm	315 mm
Dimensions (LxW)	1.882 x 1.678 mm	371 x 302 mm	1.880 x 1.934 mm	497 x 315 mm
Connecting bar	-	50X50 Square 1.200 mm x2	-	50X50 Square 1.200 mm x2
Support surface	Diam.Turnplate 283 mm	-	Diam.Turnplate 283 mm	-
Weight	968 kgs	130 Kgs/pair	1.095 kgs	180 Kgs/pair
Turning radius	1.220 mm	-	1.221 mm	-
Radio remote control	1x - Teleradio PNS-R15141	-	1x - Teleradio PNS-R15141	-
Cable Control	1x	-	1x	-
A/C Powered	400 V 50/60Hz	-	400 V 50/60Hz	-
D/C Powered	24 VDC	-	24 VDC	-
Adjustable Speed	1 speed	-	1 speed	-
Max speed	4 mts/min	-	3 mts/min	-
Op. Battery time	1 - 1,5 hrs	-	1 - 1,5 hrs	-
Charging time	8 hrs	-	8 hrs	-
Battery type	Pure lead batteries	-	Pure lead batteries	-
Hydraulic cylinder	1 x 30.000 kgs WLL	-	1 x 50.000 kgs WLL	-
Cylinder stroke	70 mm	-	70 mm	-

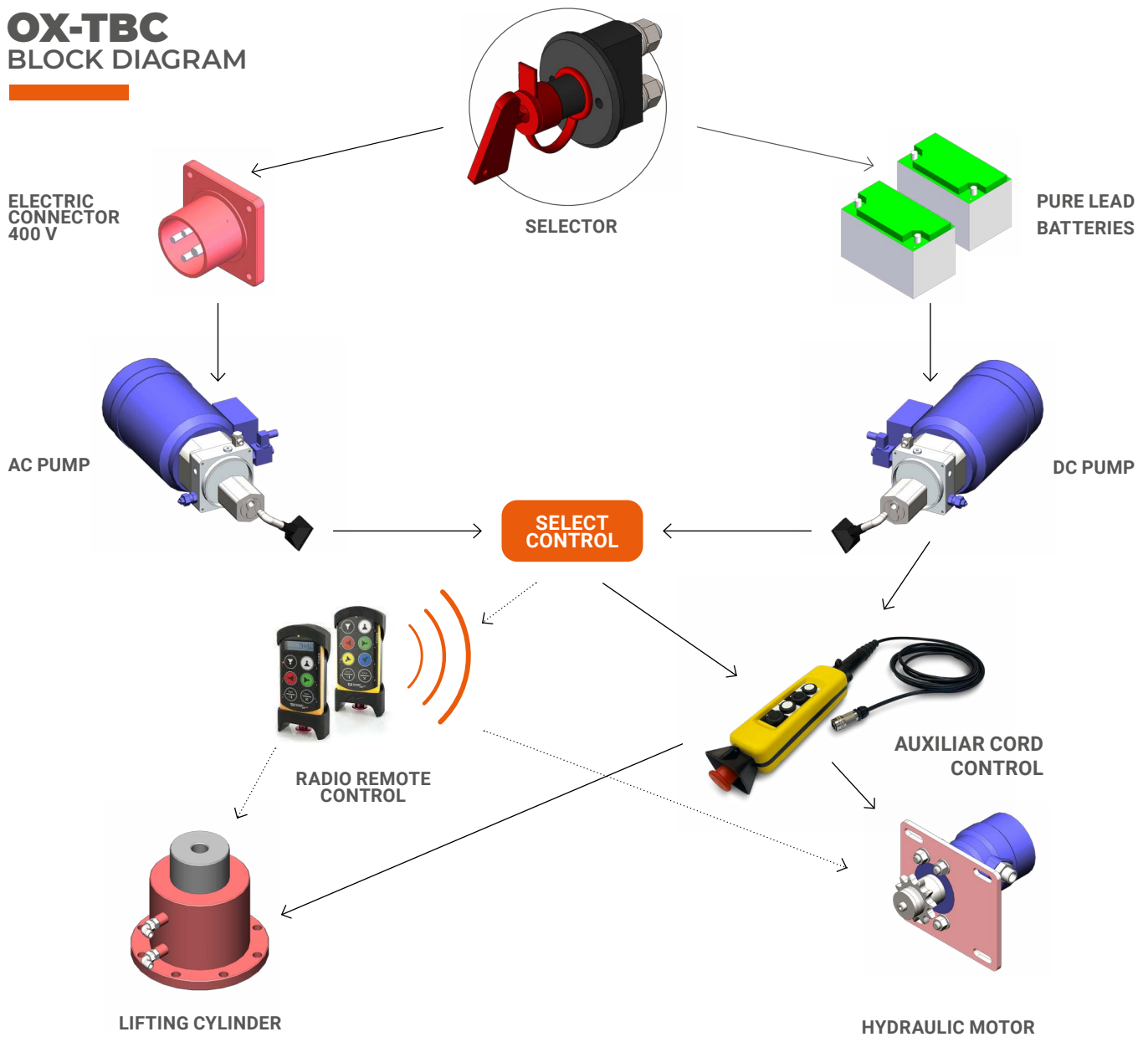
*PA: Polyamide

OX-TBC SPECIFICATIONS

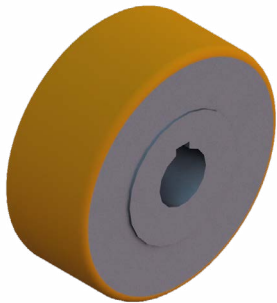
- Self propelled trolleys (turn 360°)
- Power: 380 VAC III 50 Hz and by battery module
Optional: different tension and frequency
- Chain and pinion drive in every wheel
- Supplied with a remote control and an auxiliar cord control

- Main rotating hydraulic cylinder (lift 70 mm the whole load)
- Speed: between 3 or 4 m/min (or to be agreed)
- Polyamide wheels

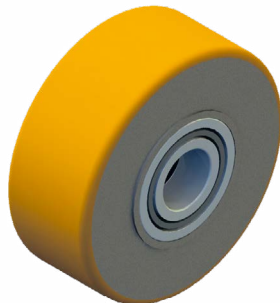
OX-TBC BLOCK DIAGRAM



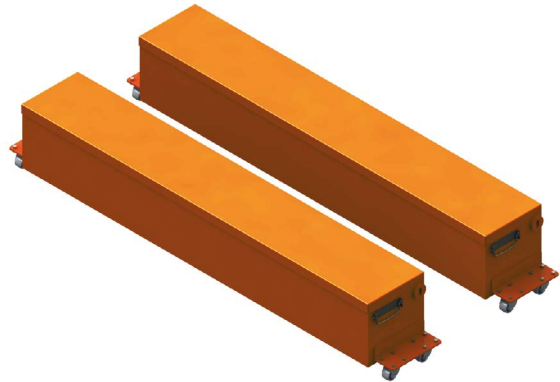
MACHINE MOVERS ACCESORIES AND SPARE PARTS



CH
Trolley traction wheel.



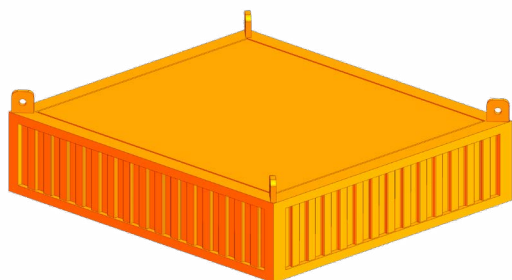
RD
Rear-trolley wheel
with bearing.



POLYURETHANE WHEELS

In case the floor is very slippery it is recommended to use polyurethane wheels (in combination with polyamide wheels) for better traction.

CODE	DESCRIPTION (WHEEL / PIN)
801PU200CH	200 x 100 / 45
801PU200RD	200 x 100 / 45
801PU250CH	200 x 100 / 60
801PU250RD	200 x 100 / 60



TRANSPORT BOXES

We supply all our trolleys with treated wooden box (not included in the price of the trolley) with cover, for better transport and handling.
But we can design any type of box, metallic for example, for better storage.

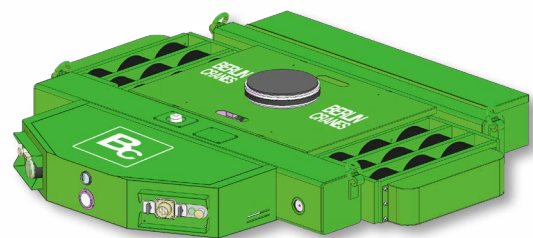
AUXILIARY BATTERY BOX

All TBC trolleys are supplied with a battery box for continuous use of approximately 45-60 min approx. This time may vary depending on the conditions of use, load, type of floor, etc.

The auxiliary battery box is a box with wheels for quick change of the supplied with the original trolley, so that we double the working time.

The change can be made in one minute.

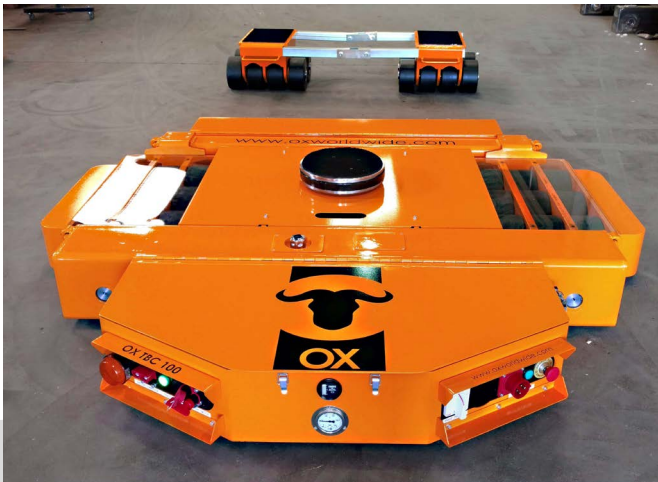
CODE	DESCRIPTION
801TBC1CBAUX	Auxiliary Battery Box



PAINTING. FINISH. SERIGRAPHY.

We offer you the possibility to customize your product by choosing the RAL paint you wish, serigraphy with your company logo, etc...

MACHINE MOVERS
PORTFOLIO



ROTATING TROLLEYS

TECHNICAL FEATURES & OPTIONS

TECHNICAL FEATURES

- Rotating trolley (rotates 360°).
- Mobile platform with free wheels.
- Loads from 3,2 to 6 tons.
- It can be combined with manual trolleys.
- Polyamide wheels.
- It is recommended the transported load to be two thirds of the capacity of the set of rotating trolleys chosen by the customer.
- The transported load must cover at least 70% of the support rubber surface (dimension D) and the weight must be centered.
- The rotating trolleys have a Ø20mm central hole that allows the customer to fix the load to the device. As well as a lateral hole of Ø22mm to place a shackle of 3.25t to manipulate the trolley with no load on it.

OPTIONS

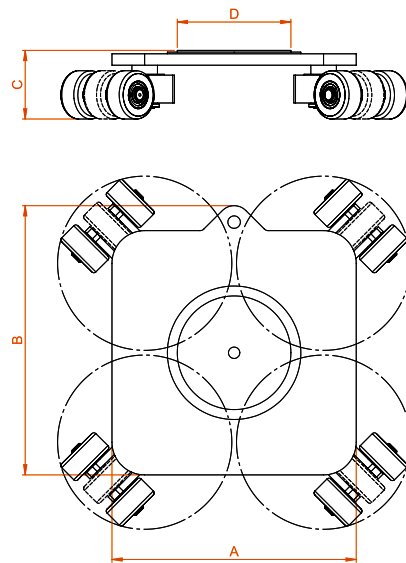
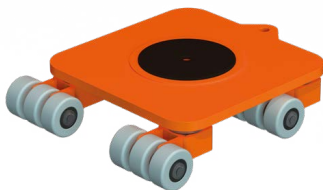
- Steel wheels.
- Galvanized finish.
- Other dimensions can be manufactured under request

CODE	DESCRIPTION	WLL (t)	PLATFORM DIMENSIONS (mm)				NUMBER AND MATERIAL OF WHEELS	WHEEL DIMENSIONS Ø x E (mm)	WEIGHT (kg)
			A	B	C	D			
801CG232	OX-CG 3,2 Rotating Trolley	3,2	380	425	115	Ø200	8 polyurethan	Ø 85 x 40	31
801CG240	OX-CG 4 Rotating Trolley	4	380	425	115	Ø200	8 polyurethan	Ø 85 x 40	31
801CG248	OX-CG 4,8 Rotating Trolley	4,8	430	475	120	Ø200	12 polyurethan	Ø 85 x 40	48
801CG260	OX-CG 6 Rotating Trolley	6	430	475	120	Ø200	12 polyurethan	Ø 85 x 40	48

4t OX-CG 4 Rotating Trolley



6t OX-CG 6 Rotating Trolley

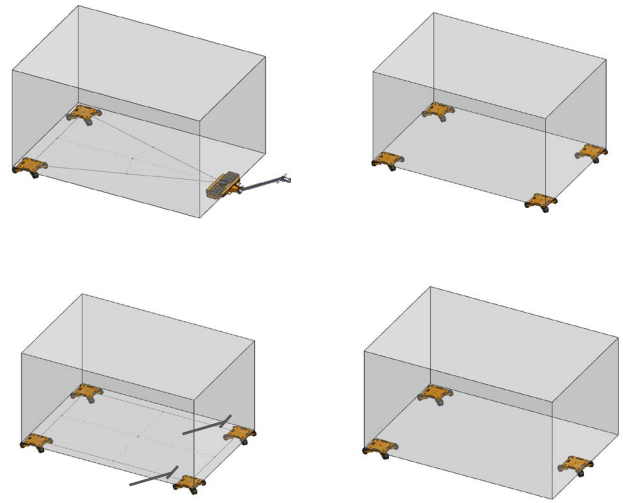


ROTATING TROLLEYS

POSSIBLE USES

POSSIBLE USES

It is mandatory to use, at least, three points of support and the center of gravity has to be known and centered. You can combine the manual trolleys and the rotating trolleys.



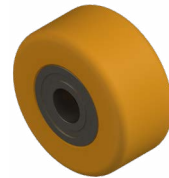
INCLUDED ACCESSORIES



CFCG200300
Smooth rubber

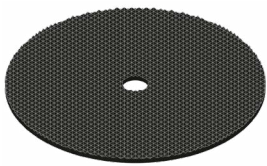


CFCG200400
Polyamide wheel



CFCG200401
Polyamide wheel

OPTIONAL ACCESSORIES



CFCG200301
Studded rubber



CFCG200402
Steel wheel

